

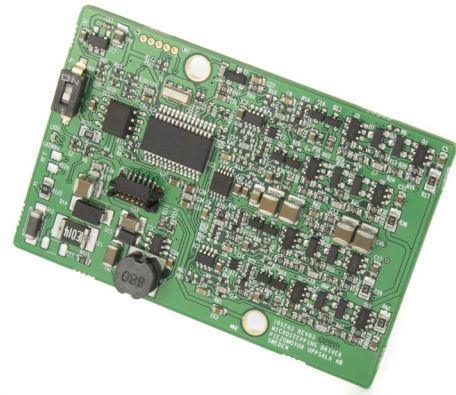
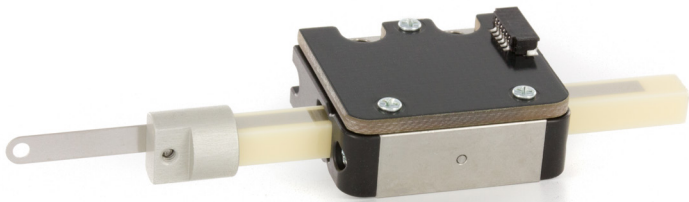
Dear Customer

Thank you for purchasing this demo-kit!

Included is all necessary hardware to get you started with evaluation of the direct drive linear motor LL06 and controller board PMD401.

Please download technical documentation, software, drivers, and starter guide from our website:

www.piezomotor.com/app/content/uploads/demo-kit.zip



Hardware included in the kit:

- LL06 motor *LL06A0-050M1G1E1*
 - PMD401 controller *PMD401-01B*
 - Connector board *CB-PMD401*
 - Power supply 48V *105787-HK-ALL*
 - USB-to-RS485 converter *107401*
- Orange = Data+
Black = GND
Yellow = Data-
- Motor cable (5-pole) *CK6292-05*
 - Sensor cable (6-pole) *CK6293-05*

Communication

Commands are ASCII over 2-wire RS485 at 115.2 kbps (n81). The USB-to-RS485 converter requires FTDI drivers installed on your computer. Command syntax and functionality is described in the literature – download link on opposite page

